

AMBANG GROUP

Hebei Ambang Valve & Fittings Co.,Ltd.

Hebei Ambang Valve & Fittings Co., Ltd, devote to manufacture the sanitary fluid fittings and valves to the Industry of beer, beverage, dairy products and pharmace etc.

We also can produce the industry pipe fittings and valves. They are used in the field including chemical and petrochemical plants, paper mills, shipyards, gas processing plants, water treatment plants, etc.

Excellent quality, fast delivery, and best service have won good reputation for this company for more than 10 years. The products are sold all over the world.

The company cordially invites potential customers

to develop business relationship.

Hebei Ambang Valve & Fittings Co.,Ltd.
Add : Econo.&Tech,E/zone,Cangzhou, China.
Tel : 86-317-7970998
Fax : 86-317-7613366
Email : chinambang@gmail.com

CLAMP FITTINGS



14 MPHT



22 MP



14 AM7



13 MHH



14 WMP



13 MHP



21 MP



13 MHHM

PRODUCT INFO

CLAMPS

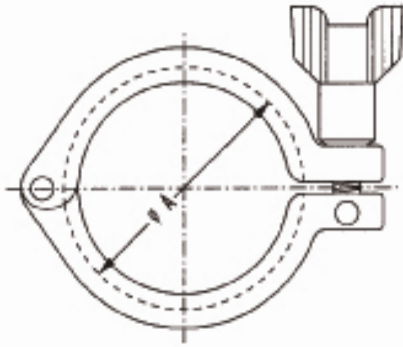
- 13 MHH HEAVY DUTY CLAMP (3A) 1/2" TO 6"*
- 13 MHP HIGH PRESSURE CLAMP (3A) 1" TO 4"*
- 13 MHHM HEAVY DUTY CLAMP (3A) 1" TO 4"*
- DOUBLE HINGE HEAVY DUTY CLAMP (ISO) 1/2" TO 6"*

CLAMP FITTINGS

- 14WMP BUTT WELD FERRULE 1/2" TO 12"*
- 14MMP BUTT WELD FERRULE 1/2" TO 12"*
- 14AM7 BUTT WELD FERRULE 1/2" TO 12"*
- 14MPW TANK WELD FERRULE 1" TO 4"*
- 14RMP EXPANDED FERRULE 1" TO 4"*
- TL14AM7 BUTT WELD FERRULE 1/2" TO 4"*
- 16AMP SOLID END CAP 1/2" TO 12"*
- 21MP MALE ADAPTER NPT 1/2" x 1/2" TO 4" x 4"*
- 22MP FEMALE ADAPTER NPT 1/2" x 1/2" TO 4" x 4"*
- 14MPHR RUBBER HOSE ADAPTER 1" TO 4"*
- 14WLMP TANK WELD FERRULE LIGHT 1" TO 4"*
- 14MPHT TYGON HOSE ADAPTER 1" TO 4"*
- 14MPHRL BREWERY HOSE BARB 1" TO 4"*

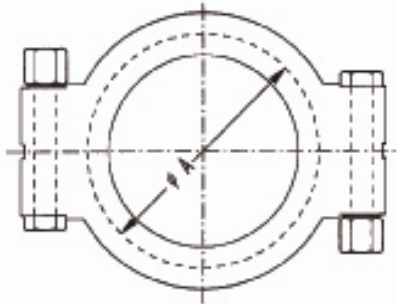
A 3

CLAMPS



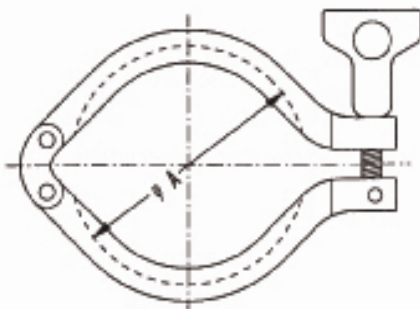
13MHH HEAVY DUTY CLAMP(3A)

SIZE	A	
	inch	mm
1/2	1.11	28.2
3/4	1.11	28.2
1	2.11	53.6
1-1/2	2.11	53.6
2	2.64	67.1
2-1/2	3.17	80.5
3	3.71	94.2
4	4.81	122.1
6	6.71	170.4



13MHP HIGH PRESSURE CLAMP(3A)

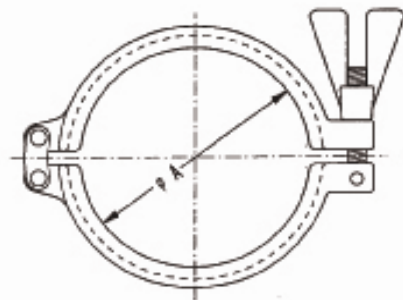
SIZE	A	
	inch	mm
1	2.05	52.0
1-1/2	2.05	52.0
2	2.58	65.5
2-1/2	3.11	79.0
3	3.64	92.5
4	4.74	120.5



13MHM HEAVY DUTY CLAMP(3A)

SIZE	A	
	inch	mm
1	2.05	52.0
1-1/2	2.05	52.0
2	2.58	65.5
2-1/2	3.11	79.0
3	3.64	92.5
4	4.74	120.5

DOUBLE HINGE HEAVY
DUTY CLAMP(ISO)

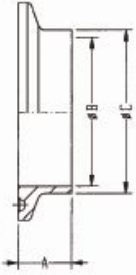


SIZE	A	
	inch	mm
1/2	1.10	28.0
3/4	1.10	28.0
1	2.09	53.0
1-1/2	2.09	53.0
2	2.65	67.4
2-1/2	3.19	80.9
3	3.72	94.4
4	4.80	122.0
6	6.73	170.0

A 3

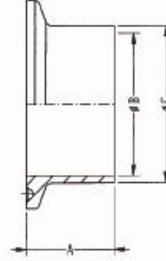
CLAMP FITTINGS

14WMP BUTT WELD FERRULE



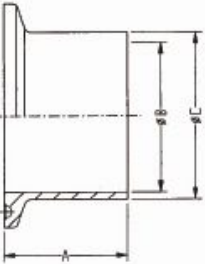
SIZE	A		B		C	
	inch	mm	inch	mm	inch	mm
1/2"	0.500	12.7	0.37	9.4	0.50	12.7
3/4"	0.500	12.7	0.62	15.8	0.75	19.1
1"	0.500	12.7	0.87	22.1	1.00	25.4
1 1/2"	0.500	12.7	1.37	34.8	1.50	38.1
2"	0.500	12.7	1.87	47.5	2.00	50.8
2 1/2"	0.500	12.7	2.37	60.2	2.50	63.5
3"	0.500	12.7	2.87	72.9	3.00	76.2
4"	0.630	15.9	3.83	97.3	4.00	101.6
6"	0.875	22.2	5.78	146.8	6.00	152.4
8"	0.875	22.2	7.78	197.6	8.00	203.2
10"	0.875	22.2	9.76	247.9	10.00	254.0
12"	0.875	22.2	11.76	298.7	12.00	304.0

14MMP BUTT WELD FERRULE



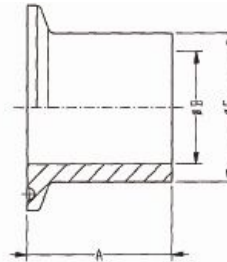
SIZE	A		B		C	
	inch	mm	inch	mm	inch	mm
1/2"	0.85	21.5	0.37	9.4	0.50	12.7
3/4"	0.85	21.5	0.62	15.8	0.75	19.1
1"	0.80	21.5	0.89	22.6	1.00	25.4
1 1/2"	0.85	21.5	1.37	34.8	1.50	38.1
2"	0.85	21.5	1.91	48.6	2.00	50.8
2 1/2"	0.85	21.5	2.37	60.3	2.50	63.5
3"	0.85	21.5	2.87	72.9	3.00	76.2
4"	0.85	21.5	3.84	97.6	4.00	101.6
6"	0.85	21.5	5.78	146.8	6.00	152.4
8"	0.85	21.5	7.78	197.6	8.00	203.2
10"	0.85	21.5	9.76	247.9	10.00	254.0
12"	0.85	21.5	11.76	298.7	12.00	304.9

14AMP BUTT WELD FERRULE



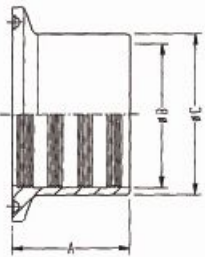
SIZE	A		B		C	
	inch	mm	inch	mm	inch	mm
1/2"	1.125	28.6	0.37	9.4	0.50	12.7
3/4"	1.125	28.6	0.62	15.8	0.75	19.1
1"	1.125	28.6	0.87	22.1	1.00	25.4
1 1/2"	1.125	28.6	1.37	34.8	1.50	38.1
2"	1.125	28.6	1.87	47.5	2.00	50.8
2 1/2"	1.125	28.6	2.37	60.2	2.50	63.5
3"	1.125	28.6	2.87	72.9	3.00	76.2
4"	1.125	28.6	3.83	97.3	4.00	101.6
6"	1.500	38.1	5.78	146.8	6.00	152.4
8"	1.500	38.1	7.78	197.6	8.00	203.2
10"	1.750	44.5	9.76	247.9	10.00	254.0
12"	1.750	44.5	11.76	298.7	12.00	304.8

14MPW TANK WELD FERRULE



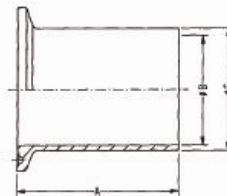
SIZE	A		B		C	
	inch	mm	inch	mm	inch	mm
1"	1.625	41.3	0.870	22.1	1.160	29.5
1 1/2"	1.625	41.3	1.370	34.8	1.676	42.6
2"	1.750	44.5	1.870	47.5	2.192	55.7
2 1/2"	1.750	44.5	2.370	60.2	2.706	68.7
3"	1.812	46.0	2.870	72.9	3.224	81.9
4"	2.215	56.3	3.834	97.4	4.256	108.1

14RMP EXPANDED FERRULE



SIZE	A		B		C	
	inch	mm	inch	mm	inch	mm
1"	0.750	19.1	1.005	25.5	1.160	29.5
1 1/2"	1.125	28.6	1.505	38.2	1.676	42.6
2"	1.312	33.3	2.005	50.9	2.192	55.7
2 1/2"	1.375	34.9	2.505	63.6	2.708	68.8
3"	1.438	36.5	3.005	76.3	3.224	81.9
4"	1.500	38.1	4.005	101.7	4.256	108.1

TL14AM7 BUTT WELD FERRULE



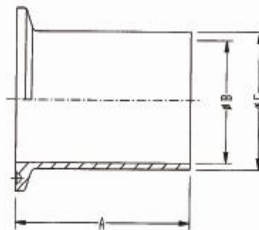
SIZE	A		B		C	
	inch	mm	inch	mm	inch	mm
1/2"	1.75	44.5	0.37	9.4	0.50	12.7
3/4"	1.75	44.5	0.62	15.8	0.75	19.1
1"	1.75	44.5	0.87	22.1	1.00	25.4
1 1/2"	1.75	44.5	1.37	34.8	1.50	38.1
2"	2.25	57.2	1.87	47.5	2.00	50.8
2 1/2"	2.25	57.2	2.37	60.2	2.50	63.5
3"	2.25	57.2	2.87	72.9	3.00	76.2
4"	2.25	57.2	3.83	97.3	4.00	101.6

16AMP SOLID END CAP



SIZE	A		B		C	
	inch	mm	inch	mm	inch	mm
1/2"	0.15	3.90	0.22	5.58	0.984	25.00
3/4"	0.15	3.90	0.22	5.58	0.984	25.00
1"	0.11	2.84	0.25	6.40	1.984	50.39
1 1/2"	0.11	2.84	0.25	6.40	1.984	50.39
2"	0.11	2.84	0.25	6.40	2.516	63.90
2 1/2"	0.11	2.84	0.25	6.40	3.047	77.39
3"	0.11	2.84	0.25	6.40	3.579	90.90
4"	0.11	2.84	0.31	7.87	4.682	118.90
6"	0.22	5.58	0.43	10.92	6.562	166.70
8"	0.22	5.58	0.43	10.92	8.600	218.50
10"	0.22	5.58	0.43	10.92	10.570	268.50
12"	0.22	5.58	0.43	10.92	12.570	319.27

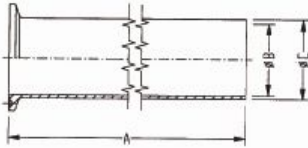
14WLMP TANK WELD FERRULE LIGHT



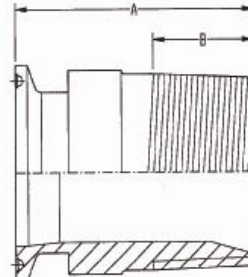
SIZE	A		B		C	
	inch	mm	inch	mm	inch	mm
1"	3.00	76.2	0.87	22.1	1.00	25.4
1 1/2"	3.00	76.2	1.37	34.8	1.50	38.1
2"	3.00	76.2	1.87	47.5	2.00	50.8
2 1/2"	3.00	76.2	2.37	60.2	2.50	63.5
3"	4.00	101.6	2.87	72.9	3.00	76.2
4"	4.00	101.6	3.83	97.3	4.00	101.6

A 3

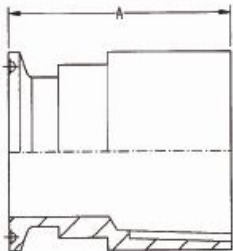
CLAMP FITTINGS



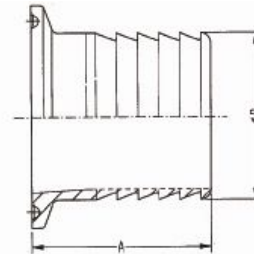
14MPHT TYGON HOSE ADAPTER						
SIZE	A		B		C	
	inch	mm	inch	mm	inch	mm
1"	4.50	114.3	0.87	22.1	1.00	25.4
1 1/2"	4.50	114.3	1.37	34.8	1.50	38.1
2"	4.50	114.3	1.87	47.5	2.00	50.8
2 1/2"	4.50	114.3	2.37	60.2	2.50	63.5
3"	4.50	114.3	2.87	72.9	3.00	76.2
4"	4.63	117.5	3.84	97.3	4.00	101.6



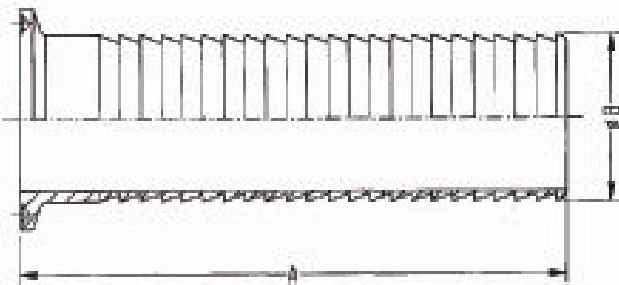
21MP MALE ADAPTER NPT				
FERRULE x NPT	A		B	
	inch	mm	inch	mm
1/2" x 1/2"	1.625	41.30	0.579	14.70
3/4" x 3/4"	1.785	45.40	0.689	17.50
1" x 1"	2.000	50.80	0.900	22.86
1 1/2" x 1"	2.244	57.00	0.724	18.39
1 1/2" x 1 1/2"	2.250	57.15	0.950	24.13
2" x 1 1/2"	2.250	57.15	0.757	19.23
2" x 2"	2.375	60.33	0.950	24.13
2 1/2" x 2 1/2"	2.850	72.40	1.375	34.93
3" x 3"	2.900	73.70	1.430	36.32
4" x 4"	3.000	76.20	1.530	38.86



22MP FEMALE ADAPTER NPT		
FERRULE x NPT	A	
	inch	mm
1/2" x 1/2"	1.625	41.30
3/4" x 3/4"	1.785	45.40
1" x 1"	2.000	50.80
1 1/2" x 1"	2.000	50.80
1 1/2" x 1 1/2"	2.250	57.15
2" x 1 1/2"	2.250	57.15
2" x 2"	2.375	60.30
2 1/2" x 2 1/2"	2.850	72.40
3" x 3"	2.900	73.70
4" x 4"	3.000	76.20



14MPHR RUBBER HOSE ADAPTER				
SIZE	A		B	
	inch	mm	inch	mm
1"	1.688	42.88	1.000	25.40
1 1/2"	1.688	42.88	1.500	38.10
2"	2.313	58.75	2.000	50.80
2 1/2"	2.344	59.54	2.500	63.50
3"	3.094	78.59	3.000	76.20
4"	4.406	111.91	4.000	101.60



14MPHRL BREWERY HOSE BARB

SIZE	A		B	
	inch	mm	inch	mm
1"	3.500	88.90	1.000	25.40
1 1/2"	5.000	127.00	1.500	38.10
2"	5.000	127.00	2.000	50.80
2 1/2"	5.500	139.70	2.500	63.50
3"	5.500	139.70	3.000	76.20
4"	5.500	139.70	4.000	101.60

WELDING FITTINGS & I-LINE FITTINGS



19WB



14WI



16W



15WI

PRODUCT INFO

WELDING FITTINGS :

19WB ADAPTER WELD TO MALE NPT 1" TO 4"

22WB ADAPTER WELD TO FEMALE NPT 1" TO 4"

16W WELD END CAP 1" TO 4"

3A I-LINE CLAMP FITTING :

14WI SHORT MALE FERRULE 1" TO 8"

15WI SHORT FEMALE FERRULE 1" TO 8"

14WLI LONG MALE FERRULE 1" TO 4"

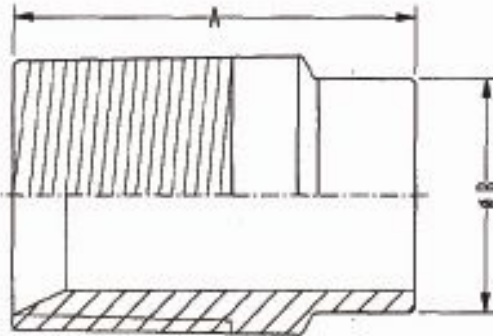
15WLI LONG FEMALE FERRULE 1" TO 4"

16AI-141 SOLID END CAP MALE 1" TO 8"

16AI-151 SOLID ENDCAP FEMALE 1" TO 8"

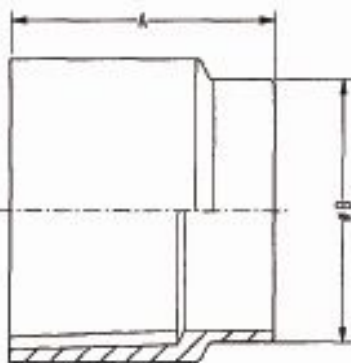
A 3

WELDING FITTINGS



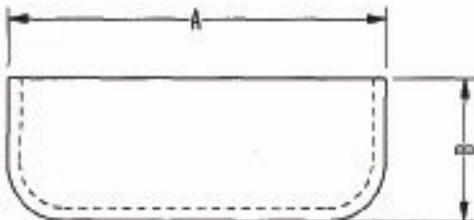
19WB ADAPTER WELD TO MALE NPT

SIZE	A		B	
	inch	mm	inch	mm
1"	1.750	44.45	1.003	25.47
1 1/2"	1.750	44.45	1.503	38.17
2"	1.812	46.02	2.003	50.87
2 1/2"	2.312	58.72	2.503	63.57
3"	2.500	63.50	3.003	76.28
4"	2.562	65.07	4.003	101.68



22WB ADAPTER
WELD TO FEMALE NPT

SIZE	A		B	
	inch	mm	inch	mm
1"	1.125	28.58	1.003	25.47
1 1/2"	1.437	36.50	1.503	38.17
2"	1.437	36.50	2.003	50.87
2 1/2"	1.625	41.28	2.503	63.57
3"	1.812	46.02	3.003	76.27
4"	2.000	50.80	4.003	101.68

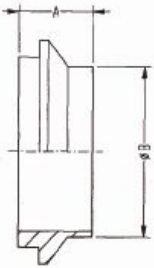


16W WELD END CAP

SIZE	A		B	
	inch	mm	inch	mm
1"	1.000	25.40	0.374	9.5
1 1/2"	1.500	38.10	0.563	14.3
2"	2.000	50.80	0.750	19.1
2 1/2"	2.500	63.50	1.063	27.0
3"	3.000	76.20	1.160	29.5
4"	4.000	101.60	1.500	38.1

A 3

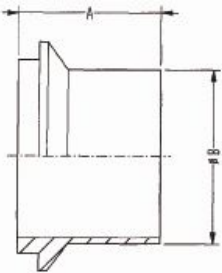
I-LINE FITTINGS



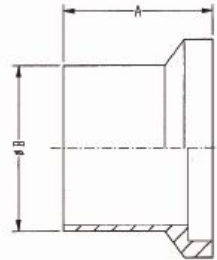
SIZE	14WI SHORT MALE FERRULE			
	A		B	
	inch	mm	inch	mm
1"	0.785	19.94	1.010	25.65
1 1/2"	0.950	24.13	1.510	38.35
2"	1.040	26.42	2.010	51.05
2 1/2"	1.160	29.46	2.510	63.75
3"	1.220	30.99	3.010	76.45
4"	1.350	34.29	4.010	101.85
6"	1.125	28.58	6.010	152.65
8"	1.125	28.58	8.010	203.45



SIZE	15WI SHORT FEMALE FERRULE			
	A		B	
	inch	mm	inch	mm
1"	0.785	19.94	1.010	25.65
1 1/2"	0.950	24.13	1.510	38.35
2"	1.040	26.42	2.010	51.05
2 1/2"	1.160	29.46	2.510	63.75
3"	1.220	30.99	3.010	76.45
4"	1.350	34.29	4.010	101.85
6"	1.125	28.58	6.010	152.65
8"	1.125	28.58	8.010	203.45



SIZE	14WLI LONG MALE FERRULE			
	A		B	
	inch	mm	inch	mm
1"	1.562	39.67	1.010	25.65
1 1/2"	1.843	46.81	1.510	38.35
2"	2.062	52.37	2.010	51.05
2 1/2"	2.188	55.58	2.510	63.75
3"	2.375	60.33	3.010	76.45
4"	2.688	68.28	4.010	101.85



SIZE	15WLI LONG FEMALE FERRULE			
	A		B	
	inch	mm	inch	mm
1"	1.750	44.45	1.010	25.65
1 1/2"	2.031	51.59	1.510	38.35
2"	2.312	58.72	2.010	51.05
2 1/2"	2.500	63.50	2.510	63.75
3"	2.688	68.28	3.010	76.45
4"	3.000	76.20	4.010	101.85



SIZE	16AI-141 SOLID END CAP MALE			
	A		B	
	inch	mm	inch	mm
1"	0.500	12.70	1.985	50.42
1 1/2"	0.500	12.70	1.985	50.42
2"	0.562	14.27	2.640	67.06
2 1/2"	0.750	19.05	3.307	84.00
3"	0.750	19.05	3.870	98.30
4"	0.750	19.05	4.870	123.70
6"	0.800	20.32	7.495	190.37
8"	0.800	20.32	9.495	241.17



SIZE	16AI-151 SOLID END CAP FEMALE			
	A		B	
	inch	mm	inch	mm
1"	0.500	12.70	1.985	50.42
1 1/2"	0.500	12.70	1.985	50.42
2"	0.562	14.27	2.640	67.06
2 1/2"	0.750	19.05	3.307	84.00
3"	0.750	19.05	3.870	98.30
4"	0.750	19.05	4.870	123.70
6"	0.800	20.32	7.495	190.37
8"	0.800	20.32	9.495	241.17

UNIONS FITTINGS



(3A) 13H



(3A) 14PRF



(3A) 15TRF



(3A) 16A

PRODUCT INFO

3A STANDARD :

13H HEX UNION NUT 1" TO 4"

14PRF SHORT PLAIN WELD FERRULE 1" TO 4"

15TRF SHORT THREAD WELD FERRULE 1" TO 4"

14R PLAIN RECESSLESS FERRULE 1" TO 4"

15R THREAD RECESSLESS FERRULE 1" TO 4"

14WL PLAIN FERRULE TANK SPUD LIGHT 1" TO 4"

15WL THREAD FERRULE TANK SPUD 1" TO 4"

14AHT TYGON HOSE ADAPTER PLAIN 1" TO 4"

15AHT TYGON HOSE ADAPTER THREAD 1" TO 4"

14A PLAIN TUBE FERRULE 1" TO 4"

15A THREAD TUBE FERRULE 1" TO 4"

16A SOLID END CAP 1" TO 4"

PRODUCT INFO

SMS STANDARD :

SMS-13R SMS NUT 6 SLOTS 25.0mm TO 104.0mm

SMS-RBN SMS BLANK NUT 25.0mm TO 104.0mm

SMS-14 LONG WELDING LINER 25.0mm TO 104.0mm

SMS-15 WELDING MALE 25.0mm TO 104.0mm

SMS-14R SMS EXPANDING LINER 25.0mm TO 104.0mm

SMS-15R SMS EXPANDING MALE 25.0mm TO 104.0mm

SMS BLANKS 25.0mm TO 104.0mm

SEAL RING (EPDM, SILICONE) 25.0mm TO 104.0mm

DIN STANDARD : (11851)

DIN-13R DIN ROUND NUT DIN10 TO DIN150

DIN-13RBN DIN BLANK NUT DIN10 TO DIN150

DIN-14 DIN WELDING LINER DIN10 TO DIN150

DIN-15 DIN WELDING MALE DIN10 TO DIN150

DIN-14R DIN EXPANDING LINER DIN10 TO DIN150

DIN-15R DIN EXPANDING MALE DIN10 TO DIN150

RJT STANDARD :

RJT-13H RJT HEXAGONAL NUT 1.0" TO 6.0"

RJT-13R RJT ROUND NUT 1.0" TO 6.0"

RJT-13RBN RJT HEXAGONAL BLANK NUT 1.0" TO 6.0"

RJT-14 RJT WELDING LINER 1.0" TO 6.0"

RJT-15 RJT WELDING MALE 1.0" TO 6.0"

RJT-14R RJT EXPANDING LINER 1.0" TO 6.0"

RJT-15R RJT EXPANDING MALE 1.0" TO 6.0"

O-RING 1.0" TO 4.0"

IDF STANDARD :

IDF-13H IDF HEXAGONAL NUT 1.0" TO 4.0"

IDF-13R IDF ROUND NUT 1.0" TO 4.0"

IDF-13RBN IDF BLANK NUT 1.0" TO 4.0"

IDF-14 IDF WELDING LINER 1.0" TO 4.0"

IDF-15 IDF WELDING MALE 1.0" TO 4.0"

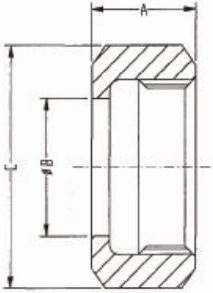
IDF-14R IDF EXPANDING LINER 1.0" TO 4.0"

IDF-15R IDF EXPANDING MALE 1.0" TO 4.0"

IDF-16 IDF BLANK 1.0" TO 4.0"

A 3

3A STANDARD



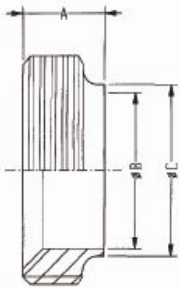
13H HEX UNION NUT

SIZE	A		B		C	
	inch	mm	inch	mm	inch	mm
1"	0.906	23.01	1.812	46.02	1.192	30.28
1 1/2"	0.968	24.60	2.040	61.11	1.708	43.38
2"	1.062	26.97	3.000	76.20	2.224	56.49
2 1/2"	1.187	30.15	3.594	91.29	2.740	69.90
3"	1.281	32.54	4.189	106.40	3.256	82.70
4"	1.500	38.10	5.412	137.69	4.288	108.92



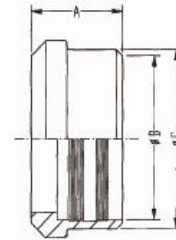
14PRF SHORT PLAIN WELD FERRULE

SIZE	A		B		C	
	inch	mm	inch	mm	inch	mm
1"	0.718	18.24	0.870	22.10	1.000	25.40
1 1/2"	0.718	18.24	1.370	34.80	1.500	38.10
2"	0.750	19.05	1.870	47.50	2.000	50.80
2 1/2"	0.874	22.20	2.370	60.20	2.500	63.50
3"	0.906	23.20	2.870	72.90	3.000	76.20
4"	1.031	26.20	3.834	97.40	4.000	101.60



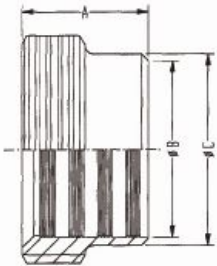
15TRF SHORT
THREADED WELD FERRULE

SIZE	A		B		C	
	inch	mm	inch	mm	inch	mm
1"	0.718	18.24	0.870	22.10	1.000	25.40
1 1/2"	0.718	18.24	1.370	34.80	1.500	38.10
2"	0.750	19.05	1.870	47.50	2.000	50.80
2 1/2"	0.874	22.20	2.370	60.20	2.500	63.50
3"	0.906	23.00	2.870	72.90	3.000	76.20
4"	1.031	26.20	3.834	97.40	4.000	101.60



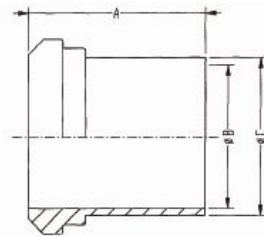
14R PLAIN RECESSLESS FERRULE

SIZE	A		B		C	
	inch	mm	inch	mm	inch	mm
1"	0.750	19.05	1.005	25.50	1.161	29.50
1 1/2"	0.875	22.23	1.505	38.20	1.667	42.60
2"	0.969	24.61	2.005	50.90	2.193	55.70
2 1/2"	1.063	26.99	2.505	63.63	2.709	68.88
3"	1.125	28.58	3.005	76.30	3.224	81.90
4"	1.250	31.75	4.005	101.70	4.256	108.10



15R THREAD RECESSLESS FERRULE

SIZE	A		B		C	
	inch	mm	inch	mm	inch	mm
1"	0.813	20.64	1.005	25.50	1.161	29.50
1 1/2"	0.875	22.23	1.505	38.20	1.677	42.60
2"	1.031	26.19	2.005	50.90	2.193	55.70
2 1/2"	1.125	28.58	2.505	63.60	2.709	68.88
3"	1.250	31.75	3.005	76.30	3.224	81.90
4"	1.375	34.93	4.005	101.70	4.256	108.10

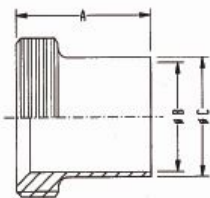


14WL PLAIN FERRULE TANK SPUD LIGHT

SIZE	A		B		C	
	inch	mm	inch	mm	inch	mm
1"	2.000	50.80	0.870	22.10	1.000	25.40
1 1/2"	2.250	57.15	1.370	34.80	1.500	38.10
2"	2.500	63.50	1.870	47.50	2.000	50.80
2 1/2"	2.750	69.85	2.370	60.20	2.500	63.50
3"	3.000	76.20	2.870	72.90	3.000	76.20
4"	4.000	101.60	3.834	97.40	4.000	101.60

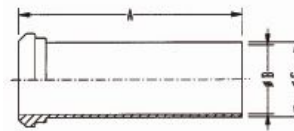
A 3

3A STANDARD



15WL THREAD FERRULE TANK SPUD

SIZE	A		B		C	
	inch	mm	inch	mm	inch	mm
1"	2.000	50.80	0.870	22.10	1.000	25.40
1 1/2"	2.250	57.15	1.370	34.80	1.500	38.10
2"	2.500	63.50	1.870	47.50	2.000	50.80
2 1/2"	2.750	69.85	2.370	60.20	2.500	63.50
3"	3.000	76.20	2.870	72.90	3.000	76.20
4"	4.000	101.60	3.834	97.40	4.000	101.60



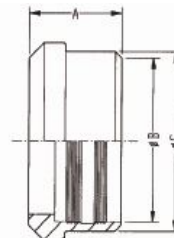
14AHT TYGON HOSE ADAPTER PLAIN

SIZE	A		B		C	
	inch	mm	inch	mm	inch	mm
1"	4.500	114.30	0.870	22.10	1.000	25.40
1 1/2"	4.500	114.30	1.370	34.80	1.500	38.10
2"	4.500	114.30	1.870	47.50	2.000	50.80
2 1/2"	4.500	114.30	2.370	60.20	2.500	63.50
3"	4.500	114.30	2.870	72.90	3.000	76.20
4"	5.000	127.00	3.834	97.40	4.000	101.60



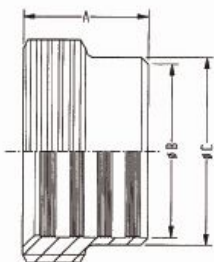
15AHT TYGON HOSE ADAPTER THREADED

SIZE	A		B		C	
	inch	mm	inch	mm	inch	mm
1"	4.500	114.30	0.870	22.10	1.000	25.40
1 1/2"	4.500	114.30	1.370	34.80	1.500	38.10
2"	4.500	114.30	1.870	47.50	2.000	50.80
2 1/2"	4.500	114.30	2.370	60.20	2.500	63.50
3"	4.500	114.30	2.870	72.90	3.000	76.20
4"	5.000	127.00	3.834	97.40	4.000	101.60



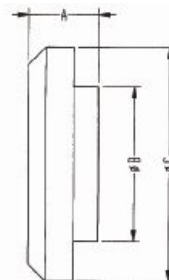
14A PLAIN TUBE FERRULE

SIZE	A		B		C	
	inch	mm	inch	mm	inch	mm
1"	1.375	34.90	0.870	22.10	1.000	25.40
1 1/2"	1.500	38.10	1.370	34.80	1.500	38.10
2"	1.500	38.10	1.870	47.50	2.000	50.80
2 1/2"	1.750	44.50	2.370	60.20	2.500	63.50
3"	1.750	44.50	2.870	72.90	3.000	76.20
4"	1.750	44.50	3.834	97.40	4.000	101.60



15A THREADED TUBE FERRULE

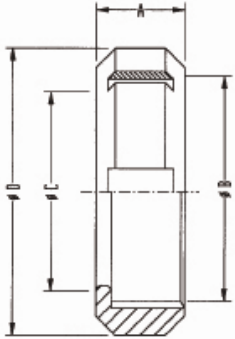
SIZE	A		B		C	
	inch	mm	inch	mm	inch	mm
1"	1.375	34.90	0.870	22.10	1.000	25.40
1 1/2"	1.500	38.10	1.370	34.80	1.500	38.10
2"	1.500	38.10	1.870	47.50	2.000	50.80
2 1/2"	1.750	44.50	2.370	60.20	2.500	63.50
3"	1.750	44.50	2.870	72.90	3.000	76.20
4"	1.750	44.50	3.834	97.40	4.000	101.60



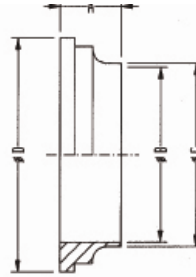
16A SOLID END CAP

SIZE	A		B		C	
	inch	mm	inch	mm	inch	mm
1"	0.469	11.90	1.161	29.50	1.135	33.40
1 1/2"	0.563	14.30	1.677	42.60	1.850	47.00
2"	0.626	15.90	2.193	55.70	2.382	60.50
2 1/2"	0.657	16.70	2.709	68.80	2.949	74.90
3"	0.720	18.30	3.224	81.90	3.445	87.50
4"	0.811	20.60	4.256	108.10	4.508	114.50

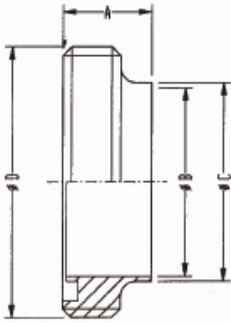
SMS STANDARD



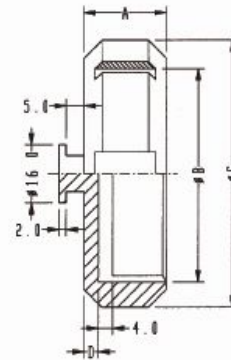
SMS-13R SMS NUT 6 SLOTS					
SIZE	A	B	C	D	
	mm	mm	mm	mm	mm
25.0	19.0	RD 40*1/6	32.3	51.0	
32.0	22.0	RD 48*1/6	40.3	60.0	
38.0	23.0	RD 60*1/6	48.3	74.0	
51.0	24.0	RD 70*1/6	61.0	84.0	
63.5	28.0	RD 85*1/6	74.0	100.0	
76.0	30.0	RD 98*1/6	87.0	114.0	
104.0	31.0	RD 125*1/4	113.0	138.0	



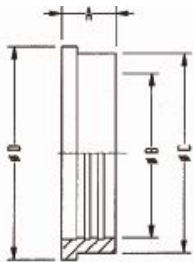
SMS-14 SMS WELDING LINER					
SIZE	A	B	C	D	
	mm	mm	mm	mm	mm
25.0	15.5	22.5	25.0	35.5	
32.0	16.0	30.5	32.0	43.5	
38.0	16.0	35.5	38.0	55.0	
51.0	17.0	48.5	51.0	65.0	
63.5	17.0	60.5	63.5	80.0	
76.0	19.0	72.9	76.1	93.0	
104.0	19.0	100.0	104.0	118.0	



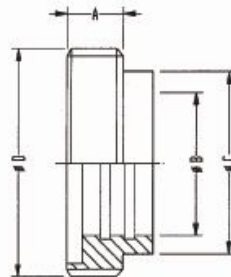
SMS-15 SMS WELDING LINER					
SIZE	A	B	C	D	
	mm	mm	mm	mm	mm
25.0	19.0	22.5	25.0	RD 40*1/6	
32.0	19.0	30.5	32.0	RD 48*1/6	
38.0	23.0	35.5	38.0	RD 60*1/6	
51.0	23.0	48.5	51.0	RD 70*1/6	
63.5	27.0	60.5	63.5	RD 85*1/6	
76.0	27.0	72.9	76.1	RD 98*1/6	
104.0	30.0	100.0	104.0	RD 125*1/4	



SMS-RBN SMS BLANK NUT					
SIZE	A	B	C	D	
	mm	mm	mm	mm	mm
25.0	19.0	RD 40*1/6	51.0	4.0	
32.0	22.0	RD 48*1/6	60.0	4.0	
38.0	23.0	RD 60*1/6	74.0	4.0	
51.0	24.0	RD 70*1/6	84.0	5.0	
63.5	28.0	RD 85*1/6	100.0	5.0	
76.0	30.0	RD 98*1/6	114.0	6.0	
104.0	31.0	RD 125*1/4	138.0	5.0	



14R SMS EXPANDING LINER					
SIZE	A	B	C	D	
	mm	mm	mm	mm	mm
25.0	17.0	25.2	32.0	35.5	
32.0	17.0	32.2	40.0	43.5	
38.0	20.0	38.2	48.0	55.0	
51.0	20.0	51.2	60.0	65.0	
63.5	25.0	63.7	73.5	80.0	
76.0	30.0	76.2	86.0	93.0	
104.0	27.0	104.2	112.5	118.0	



15R SMS EXPANDING MALE					
SIZE	A	B	C	D	
	mm	mm	mm	mm	mm
25.0	11.0	25.2	32.0	RD 40*1/6	
32.0	13.0	32.2	40.0	RD 48*1/6	
38.0	15.0	38.2	48.0	RD 60*1/6	
51.0	15.0	51.2	60.0	RD 70*1/6	
63.5	19.0	63.7	73.5	RD 85*1/6	
76.0	19.0	76.2	86.0	RD 98*1/6	
104.0	20.0	112.5	118.0	RD 125*1/4	

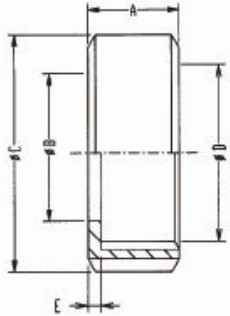


SMS BLANK				
SIZE	A	B	C	D
	mm	mm	mm	mm
25.0	7.5	32.0	3.5	35.5
32.0	8.0	40.0	4.0	43.5
38.0	9.0	48.0	5.0	55.0
51.0	10.0	60.0	5.0	65.0
63.5	10.0	73.5	5.0	80.0
76.0	11.0	86.0	5.0	93.0
104.0	11.0	112.0	6.0	118.0

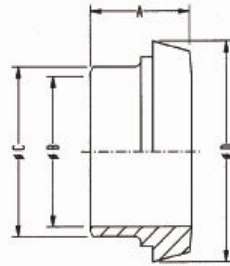


SEAL RING (EPDM • SILICONE)				
SIZE	A	B	C	D
	mm	mm	mm	mm
25.0	5.3	22.8	25.1	31.8
32.0	5.3	29.8	32.1	38.8
38.0	5.3	35.8	38.1	47.8
51.0	5.3	48.8	51.1	60.8
63.5	5.3	61.0	63.6	73.3
76.0	5.3	73.4	76.1	85.8
104.0	5.3	100.5	104.0	115.7

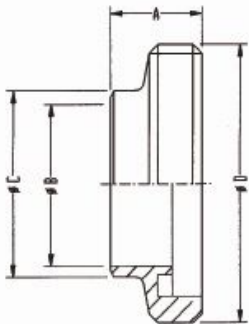
DIN (11851) STANDARD



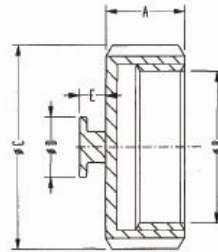
DIN-13 DIN ROUND NUT					
SIZE	A	B	C	D	E
	mm	mm	mm	mm	mm
10	18.0	19.0	38.0	RD 28*1/8	3.0
15	18.0	25.0	44.0	RD 34*1/8	3.0
20	21.0	31.0	54.0	RD 44*1/6	3.0
25	21.0	36.0	63.0	RD 52*1/6	3.0
32	21.0	42.0	70.0	RD 58*1/6	3.0
40	21.0	49.0	78.0	RD 65*1/6	3.0
50	22.0	62.0	92.0	RD 78*1/6	3.0
65	25.0	80.0	112.0	RD 95*1/6	4.0
80	30.0	94.0	127.0	RD110*1/4	4.0
100	31.0	115.0	148.0	RD130*1/4	5.0
125	35.0	138.0	178.0	RD160*1/4	5.0
150	40.0	164.0	210.0	RD190*1/4	6.0



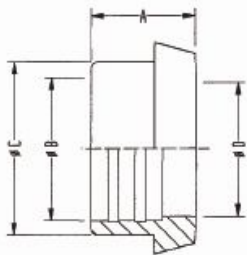
DIN-14 DIN WELDING LINER				
SIZE	A	B	C	D
	mm	mm	mm	mm
10	17.0	10.0	15.0	22.0
15	17.0	16.0	21.0	28.0
20	18.0	20.0	25.0	36.0
25	22.0	26.0	31.0	44.0
32	25.0	32.0	37.0	50.0
40	26.0	38.0	43.0	56.0
50	28.0	50.0	55.0	68.0
65	32.0	66.0	72.0	86.0
80	37.0	81.0	87.0	100.0
100	44.0	100.0	106.0	120.0
125	34.0	125.0	132.0	149.0
150	37.0	150.0	157.0	175.0



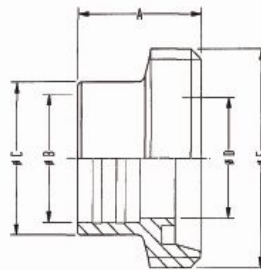
DIN-15 WELDING MALE				
SIZE	A	B	C	D
	mm	mm	mm	mm
10	21.0	10.0	15.0	RD 28*1/8
15	21.0	16.0	21.0	RD 34*1/8
20	24.0	20.0	25.0	RD 44*1/6
25	29.0	26.0	31.0	RD 52*1/6
32	32.0	32.0	37.0	RD 58*1/6
40	33.0	38.0	43.0	RD 65*1/6
50	35.0	50.0	55.0	RD 78*1/6
65	40.0	66.0	72.0	RD 95*1/6
80	45.0	81.0	87.0	RD110*1/4
100	54.0	100.0	106.0	RD130*1/4
125	46.0	125.0	132.0	RD160*1/4
150	50.0	150.0	157.0	RD190*1/4



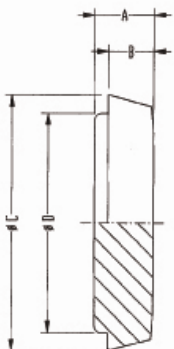
DIN-13RBN DIN BLANK NUT					
SIZE	A	B	C	D	E
	mm	mm	mm	mm	mm
10	18.0	25.2	38.0	16.0	7.0
15	18.0	31.2	44.0	16.0	7.0
20	21.0	40.3	54.0	16.0	7.0
25	21.0	48.3	63.0	16.0	7.0
32	21.0	54.3	70.0	16.0	7.0
40	21.0	61.3	78.0	16.0	7.0
50	22.0	74.3	92.0	16.0	7.0
65	25.0	91.3	112.0	16.0	7.0
80	30.0	105.0	127.0	16.0	7.0
100	31.0	125.0	148.0	16.0	7.0
125	35.0	155.0	178.0	16.0	7.0
150	40.0	185.0	210.0	16.0	7.0



DIN-14R DIN EXPANDING LINER				
SIZE	A	B	C	D
	mm	mm	mm	mm
10	17.0	12.2	18.0	10.0
15	17.0	18.2	24.0	16.0
20	18.0	22.2	30.0	20.0
25	22.0	28.2	35.0	26.0
32	25.0	34.2	41.0	32.0
40	26.0	40.2	48.0	38.0
50	28.0	52.2	61.0	50.0
65	32.0	70.3	79.0	66.0
80	37.0	85.3	93.0	81.0
100	44.0	104.3	114.0	100.0
125	34.0	129.3	137.0	125.0
150	37.0	154.3	163.0	150.0



DIN-15R DIN EXPANDING MALE					
SIZE	A	B	C	D	E
	mm	mm	mm	mm	mm
10	21.0	12.2	18.0	10.0	RD 28*1/8
15	21.0	18.2	24.0	16.0	RD 34*1/8
20	24.0	22.2	30.0	20.0	RD 44*1/6
25	29.0	28.2	35.0	26.0	RD 52*1/6
32	32.0	34.2	41.0	32.0	RD 58*1/6
40	33.0	40.2	48.0	38.0	RD 65*1/6
50	35.0	52.2	61.0	50.0	RD 78*1/6
65	40.0	70.3	79.0	66.0	RD 95*1/6
80	45.0	85.3	93.0	81.0	RD110*1/4
100	54.0	104.3	114.0	100.0	RD130*1/4
125	46.0	129.3	137.0	125.0	RD160*1/4
150	50.0	154.3	163.0	150.0	RD190*1/4

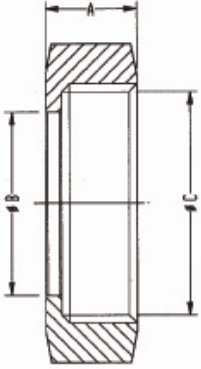


DIN BLANKS				
SIZE	A	B	C	D
	mm	mm	mm	mm
10	9.0	6.0	22.0	18.0
15	9.0	6.0	28.0	24.0
20	11.0	8.0	36.0	30.0
25	13.0	10.0	44.0	35.0
32	13.0	10.0	50.0	41.0
40	13.0	10.0	56.0	48.0
50	14.0	11.0	68.0	61.0
65	16.0	12.0	86.0	79.0
80	16.0	12.0	100.0	93.0
100	20.0	15.0	121.0	114.0
125	22.0	17.0	150.0	137.0
150	24.0	18.0	176.0	163.0



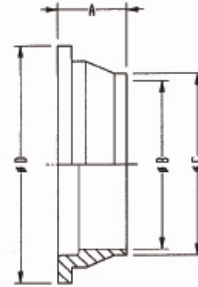
DIN SEAL RING			
SIZE	A	B	C
	mm	mm	mm
10	4.5	12.0	20.0
15	4.5	18.0	26.0
20	4.5	23.0	33.0
25	5.0	30.0	40.0
32	5.0	36.0	46.0
40	5.0	42.0	52.0
50	5.0	54.0	64.0
65	5.0	71.0	81.0
80	5.0	85.0	95.0
100	6.0	104.0	114.0
125	7.0	130.0	142.0
150	7.0	155.0	167.0

RJT STANDARD



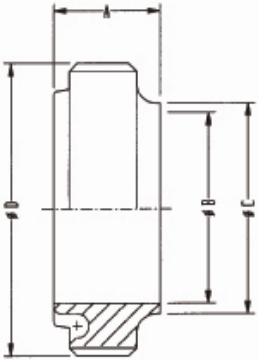
RJT-13H RJT HEXAGONAL NUT

SIZE	A mm	B mm	C mm
1.0"	22.2	33.45	42.27*8TPI WHIT
1.5"	22.2	46.00	54.97*8TPI WHIT
2.0"	22.2	58.67	67.92*6TPI WHIT
2.5"	22.2	71.40	80.62*6TPI WHIT
3.0"	22.2	84.10	93.32*6TPI WHIT
4.0"	22.2	109.70	118.72*6TPI WHIT
6.0"	24.0	163.00	169.53*6TPI WHIT



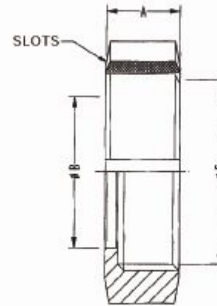
RJT-14 RJT WELDING LINER

SIZE	A mm	B mm	C mm	D mm
1.0"	19.5	22.2	25.65	41.3
1.5"	19.5	34.9	38.35	54.0
2.0"	19.5	47.6	51.05	66.7
2.5"	19.5	60.3	63.75	79.4
3.0"	19.5	73.0	76.45	92.1
4.0"	19.5	97.6	101.85	117.5
6.0"	23.5	148.0	152.50	169.1



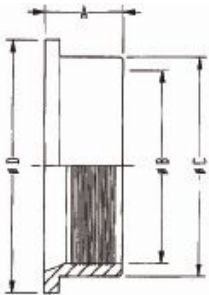
RJT-15 RJT WELDING MALE

SIZE	A mm	B mm	C mm	D mm
1.0"	26.3	22.2	25.65	45.75*8TPI WHIT
1.5"	26.3	34.9	38.35	58.42*8TPI WHIT
2.0"	26.3	47.6	51.05	72.72*6TPI WHIT
2.5"	26.3	60.3	63.75	85.42*6TPI WHIT
3.0"	26.3	73.0	76.45	98.12*6TPI WHIT
4.0"	26.3	97.6	101.85	123.52*6TPI WHIT
6.0"	26.3	148.0	152.50	174.32*6TPI WHIT



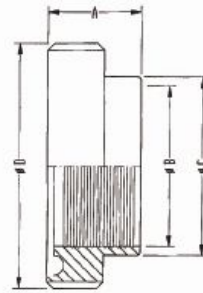
RJT-13R RJT ROUND NUT

SIZE	A mm	B mm	C mm	SLOTS
1.0"	22.2	33.45	42.27*8TPI WHIT	6
1.5"	22.2	46.00	54.97*8TPI WHIT	6
2.0"	22.2	58.67	67.92*6TPI WHIT	6
2.5"	22.2	71.40	80.62*6TPI WHIT	6
3.0"	22.2	84.10	93.32*6TPI WHIT	6
4.0"	22.2	109.70	118.72*6TPI WHIT	6
6.0"	24.0	163.00	169.52*6TPI WHIT	10



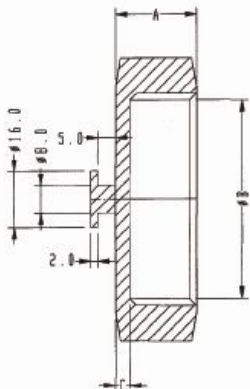
RJT-14R RJT EXPANDING LINER

SIZE	A mm	B mm	C mm	D mm
1.0"	20.0	25.5	32.5	41.3
1.5"	24.0	38.2	45.2	54.0
2.0"	28.0	50.9	57.9	66.7
2.5"	32.0	63.6	70.6	79.4
3.0"	32.0	76.3	83.3	92.1
4.0"	32.0	101.7	108.7	117.5



RJT-15R RJT EXPANDING MALE

SIZE	A mm	B mm	C mm	D mm
1.0"	20.0	25.5	32.5	45.72*8TPI WHIT
1.5"	24.0	38.2	45.2	58.42*8TPI WHIT
2.0"	28.0	50.9	57.9	72.72*6TPI WHIT
2.5"	32.0	63.6	70.6	85.42*6TPI WHIT
3.0"	32.0	76.3	83.3	98.12*6TPI WHIT
4.0"	32.0	101.7	108.7	123.82*6TPI WHIT



RJT-13RBN RJT HEXAGONAL BLANK NUT

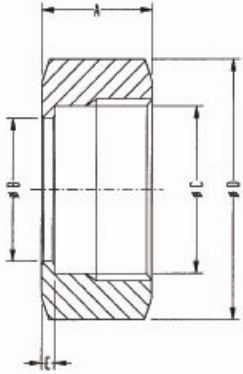
SIZE	A mm	B mm	C mm
1.0"	22.2	42.27*8TPI WHIT	4.0
1.5"	22.2	54.97*8TPI WHIT	4.0
2.0"	22.2	67.92*6TPI WHIT	4.0
2.5"	22.2	80.62*6TPI WHIT	4.0
3.0"	22.2	93.32*6TPI WHIT	4.0
4.0"	22.2	118.72*6TPI WHIT	4.0



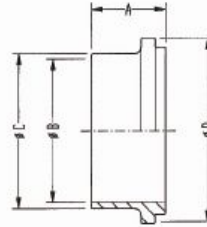
O-RING

SIZE	A mm	B mm
1.0"	33.3	6.6
1.5"	46.0	6.6
2.0"	58.7	6.6
2.5"	71.4	6.6
3.0"	84.1	6.6
4.0"	109.5	6.6

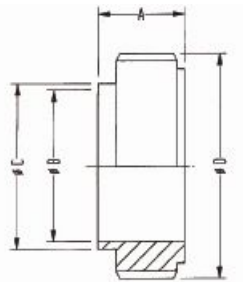
IDF STANDARD



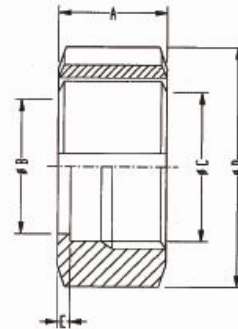
IDF-13H IDF HEXAGONAL NUT					
SIZE	A	B	C	D	E
1.0"	30.0	30.5	34.34*8T ACME	46.0	3.5
1.5"	30.0	43.5	47.86*8T ACME	60.0	3.5
2.0"	30.0	57.0	61.37*8T ACME	75.0	3.5
2.5"	30.0	70.7	74.88*8T ACME	90.0	3.5
3.0"	30.0	83.3	88.40*8T ACME	105.0	3.5
4.0"	35.0	112.0	122.00*6T ACME	133.0	4.7



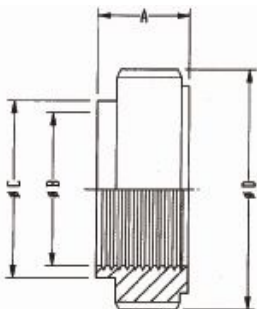
IDF-14 IDF WELDING LINER				
SIZE	A	B	C	D
1.0"	21.5	22.2	25.65	33.8
1.5"	21.5	34.9	38.35	47.0
2.0"	21.5	47.6	51.05	60.5
2.5"	21.5	60.3	63.75	74.0
3.0"	21.5	73.0	76.45	87.5
4.0"	30.0	97.6	101.85	120.6



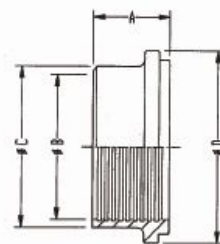
IDF-15 IDF WELDING MALE				
SIZE	A	B	C	D
1.0"	21.5	22.2	25.65	37.13*8T ACME
1.5"	21.5	34.9	38.35	50.65*8T ACME
2.0"	21.5	47.6	51.05	64.16*8T ACME
2.5"	21.5	60.3	63.75	77.76*8T ACME
3.0"	21.5	73.0	76.45	91.19*8T ACME
4.0"	30.0	97.6	101.85	125.90*6T ACME



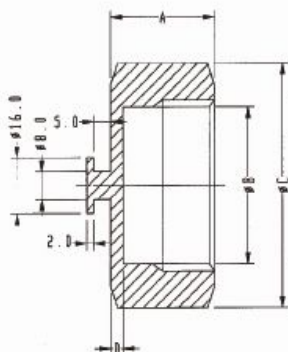
IDF-13R IDF ROUND NUT					
SIZE	A	B	C	D	E
1.0"	30.0	30.5	34.34*8T ACME	50.0	3.5
1.5"	30.0	43.5	47.86*8T ACME	65.0	3.5
2.0"	30.0	57.0	61.37*8T ACME	79.0	3.5
2.5"	30.0	70.7	74.97*8T ACME	95.0	3.5
3.0"	30.0	83.3	88.40*8T ACME	108.0	3.5
4.0"	35.0	112.0	122.00*8T ACME	135.0	4.7



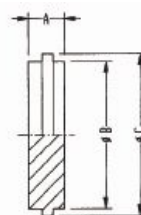
IDF-15R IDF EXPANDING MALE				
SIZE	A	B	C	D
1.0"	16.5	25.5	29.2	37.13*8T ACME
1.5"	19.5	38.2	42.7	50.65*8T ACME
2.0"	19.5	50.9	56.2	64.16*8T ACME
2.5"	25.0	63.6	69.9	77.76*8T ACME
3.0"	30.0	76.3	82.6	91.19*8T ACME
4.0"	30.0	101.7	108.0	125.90*6T ACME



IDF-14R IDF EXPANDING LINER				
SIZE	A	B	C	D
1.0"	20.0	25.5	29.2	33.8
1.5"	20.0	38.2	42.7	47.0
2.0"	25.0	50.9	56.2	60.5
2.5"	30.0	63.6	69.9	74.0
3.0"	30.0	76.3	82.6	87.5
4.0"	30.0	101.7	108.0	120.6



IDF-13RBN IDF BLANKS NUT				
SIZE	A	B	C	D
1.0"	30.0	34.34*8T ACME	46.0	3.5
1.5"	30.0	47.86*8T ACME	60.0	3.5
2.0"	30.0	61.37*8T ACME	75.0	3.5
2.5"	30.0	74.88*8T ACME	90.0	3.5
3.0"	30.0	88.40*8T ACME	105.0	3.5
4.0"	35.0	122.05*8T ACME	133.0	4.7



IDF-16 IDF BLANKS			
SIZE	A	B	C
1.0"	10.5	29.2	33.8
1.5"	10.5	42.7	47.0
2.0"	10.5	56.2	60.5
2.5"	10.5	69.9	74.0
3.0"	10.5	82.6	87.5
4.0"	12.6	111.1	114.1